

Getting started with Memory Map

Map List

Browse your map collection and select the map you want to view

Properties

Organise your overlays (Routes, Tracks, Marks/Waypoints) Toggle on / off, change appearance, view details such as route length, position, ascent & descent and create route cards

Place name search

Type a place name to view a map of the area

Data display

Toggle on/off position data display at cursor

Help

Scale In / Out

Quick scale in or out to the next available map

Zoom In / Out

Zoom in or out of the current map

Route Tool

Drop connected waypoints by clicking the map
Drag to move or right-click to edit. Organise and view information in the Properties option

Track Tool

Freehand drawing tool
Does not include waypoints

Digital Map Shop

Download custom maps

Text

Add text notes to your maps

Marks

Drop Mark / POI for reference or navigation

Undo / Redo

Sync Windows™

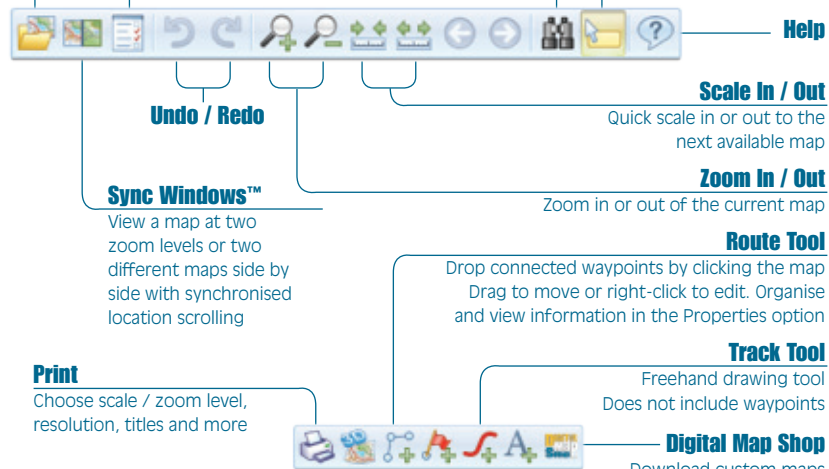
View a map at two zoom levels or two different maps side by side with synchronised location scrolling

Print

Choose scale / zoom level, resolution, titles and more

3D World™

View terrain in 3D or right-click a route to view a 3D fly-through



Help and support

For help and support please check the built in Help Pages – click **Help > Topics > Getting Started**. For more detailed information such as User Manuals and Step-by-step guides visit our knowledgebase or contact us at www.memory-map.co.uk/support

Your Serial Number

Enter the serial number below when prompted to Activate your maps and software features.

Username and password

After you create a Memory-Map account make a note of your Username and Password.

Username:

Password:



Outdoor

Marine

Aviation

Street

Historical



Easy to use Software and Digital Maps

Getting Started

www.memory-map.co.uk

MM/QSG/EN6

©2001-14 Memory-Map Europe, part of EVO Distribution Ltd.
3-4 Mars House, Calleva Park, Aldermaston. RG7 8LA

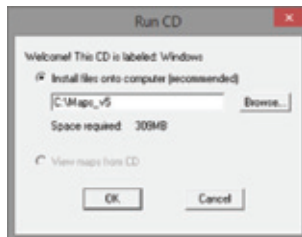


Installation & Activation

1. Insert disk or USB stick into your PC. For USB products double-click **Install_Memory-Map.exe**
2. **Run CD** will ask where to install maps. Choose **Onto computer (recommended)** or **Cancel** to view from disk/USB and click **OK**
3. Start **Memory-Map European Edition** from your PC desktop
4. In the **Refresh Map List** window check your map folder is correct (default location is C:\Maps_v5) and click **OK**
5. In the **Map List** window choose a map. Any map marked with a red X will need to be **Activated**.
6. When prompted in the **Licence Management** window click **Activate...**
Existing Users: Enter your User ID and Password.
New Users: Click **Create Account**
7. In the **Activation Window** click **Register a Serial Number** – your new serial number is on the back of this guide
8. Finally, click **Register** and your new maps will be ready to use

Checking your map licences and managing your account

To check the status of your account or migrate licences from PC click **Help > License Management > Online Info...** or sign into **My Account** at www.memory-map.co.uk



Transfer maps to mobile and Adventurer GPS

You can also use Memory-Map on your mobile, tablet or Adventurer GPS – for licence details check packaging or sign into your account. Most mobiles and tablets do not support file sizes larger than 4gb so you will need to split the large map contained on DVD or USB into smaller areas before transfer.

Splitting large maps into smaller areas

1. Create a folder on your PC eg **Memory-Map Mobile Maps**.
2. Draw an enclosed route around the area you want to send.
3. Right-click the route and select **Enclosed Area > Send to Mobile Device**
4. Click **[...]** and locate the **Memory-Map Mobile Maps** folder. Click **OK**

Transferring maps to your device

iPhone/iPad – Connect to your PC and copy maps via **File Sharing** in iTunes

Android – Connect to your PC and copy maps into the **\Download\Memory-Map** folder

Adventurer GPS – Connect to your PC and copy maps into the **\Maps** folder

Activate your maps

You will also need to **Activate** your maps on your device. For full step-by-step guides please visit www.memory-map.co.uk/support



Get more maps using Digital Map Shop

Digital Map Shop lets you download new maps directly to your PC or mobile. When you press the **DMS** button on your PC, or use **Maps > More Maps > Digital Map Shop** on your mobile, you will see a list of new maps available at your current screen location.

So, if you want to find maps of France then first use one of our free base maps and drag it until you can see France in the centre of the screen then use DMS to see what maps are available.

Many maps have a FREE demo period so try searching for:

- Ordnance Survey historical maps from the 1800s to 1940s
- Marine charts for anywhere in GB
- Aviation charts for GB and Northern Ireland
- IGN 1:100k and 1:25k topo maps for France

Downloading small areas using Digital Map Shop

You can also use DMS to download small map areas using our Pay-as-you-go service.

1. Open any base map eg 1:250k Road Atlas and draw around the area you want
2. Right-click the route and select **Digital Map Shop...**
3. Select the map you want and click **Continue...**
4. Follow the instructions to **Buy Now** or **Activate**

