

Memory-Map **TECH SUPPORT** **Bulletin #10**

Using USB GPS units and USB to Serial Cables

Overview:

This bulletin explains how to find the correct COM port setting when using a USB GPS or USB adaptor cable.

USB GPS units and USB to Serial adapter cables are normally provided with driver software which creates a virtual COM port for use with GPS programs such as Memory-Map and Maptech Offshore Navigator. Once you have installed the driver software provided with the device you can find out which COM port has been allocated by following the instructions below.

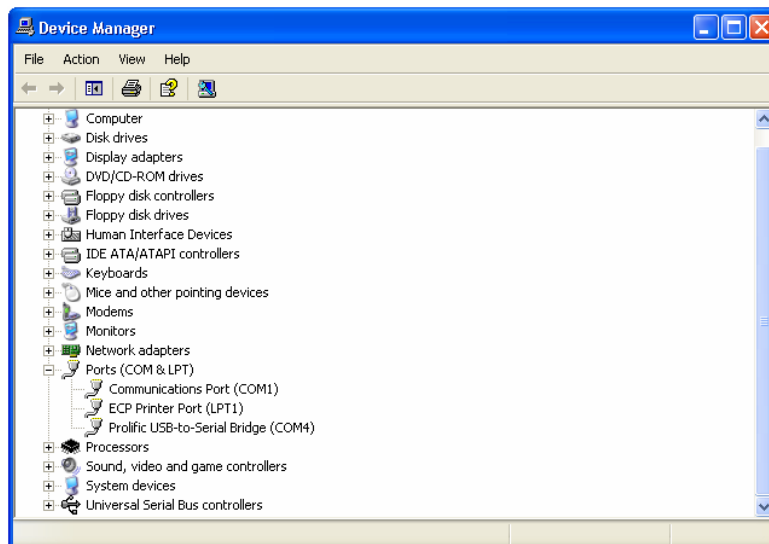
1. Make your way to Device Manager:

Windows 98/ME/2000 – Start > Settings > Control Panel > System > Device Manager

Windows XP – Start > Control Panel > System > Hardware tab > Device Manager

2. Click the '+' next to Ports (COM & LPT). In the list you should see an entry that describes your USB device, along with its allocated COM port number in brackets. Set your navigation software to look for the GPS in this COM port.

In the example below, the 'Prolific USB-to-Serial Bridge' device has been assigned to COM port 4.



If no device appears in this list then it is likely that its software has not been installed. Please consult the instruction manual that came with the device or contact the GPS/Cable supplier for support.