

Memory-Map Digital Map Shop User Guide

Memory-Map's Digital Map Shop allows you to download maps directly to your PC or mobile device. You are free to choose the area and scale of map to download anytime, day or night.

Digital Map Shop works on a system of map credits, much like a Pay As You Go mobile phone, only Digital Map Shop's credits are in the form of square kilometres (sqkm). Credit can either be bought directly through the software, or in shops and on the Internet.

As you download maps your credit is reduced accordingly. Credit can be topped up through the software itself, or by purchasing top-up vouchers in store or online.

How Digital Map Shop Works

Digital Map Shop works in 3 steps:

- 1) Choose the type of map you wish to download.
- 2) Choose the area you would like to download by drawing a route around it.
- 3) Download the map to your PC or mobile device.

When you purchase Digital Map Shop products you will receive equal credit for 1 PC and 1 mobile device, such as a Pocket PC or Adventurer 2800 GPS.

For example, a £25 DMS OS 1:25k Explorer top-up allows you to download 750sqkm of mapping for a PC and 750sqkm for a mobile device.

Once you have confirmed the area to download, the credits will be deducted from your online account and your map will be downloaded.

How To Use Digital Map Shop

All Digital Map Shop maps start as a blank canvas for you to download your mapping into. This blank canvas is in fact an empty map of the country you are downloading maps for, with the squares or chunks on it indicating the map tiles that will be downloaded upon request.

Please follow the instructions below to get started with Digital Map Shop.

1. Check that you have the most recent version of Memory-Map installed. To do this, start Memory-Map and click the menu option **Web > Check for Updates** and follow the onscreen instructions.

2. The next step is to use a basemap to choose the area you would like to download your map for. The basemap available to you will depend on whether you have any existing Memory-Map products for that area, or are new to Memory-Map:


New users: If you have purchased your Digital Map Shop product on disc then a basemap (usually a road map) will have been included on the disc. Click the Map button on the toolbar and select the basemap from the list to begin.

If you have downloaded the software from our website and wish to purchase credit directly through the software you can download a basemap from <http://www.memory-map.co.uk/basemaps/>

Existing users: If you are an existing user then you may find you already have a more detailed map covering the area you wish to download mapping for that you can use to choose the area. If not, a basemap can either be found on the CD or downloaded from <http://www.memory-map.co.uk/basemaps/>

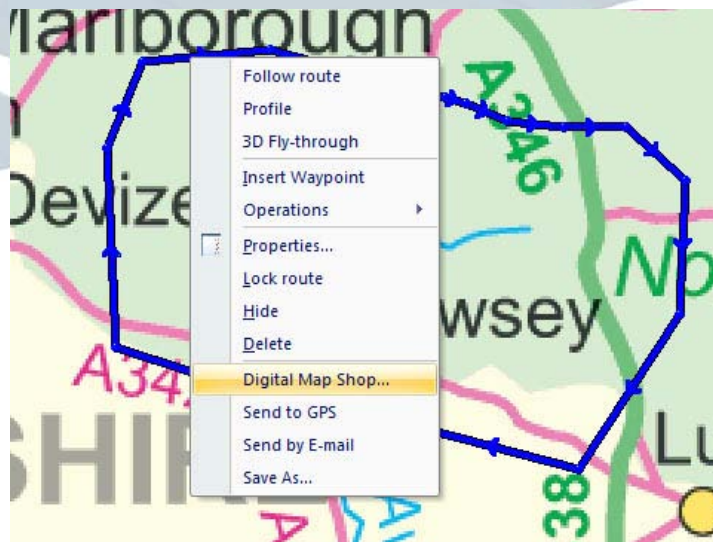
What is a basemap?

A basemap is a map you can use to draw route(s) around the areas you wish to download. For most users the basemap will generally be a road map or route planner that covers the whole country. If you are an existing user then you may already have more detailed mapping for the area(s) you wish to download, and so can use this map to choose your area.

3. Open your chosen basemap and click on the Route  button on the toolbar. Now, draw a route around the area you would like to download your map. The route must be an enclosed route meaning the last waypoint must finish exactly on top of the first one.

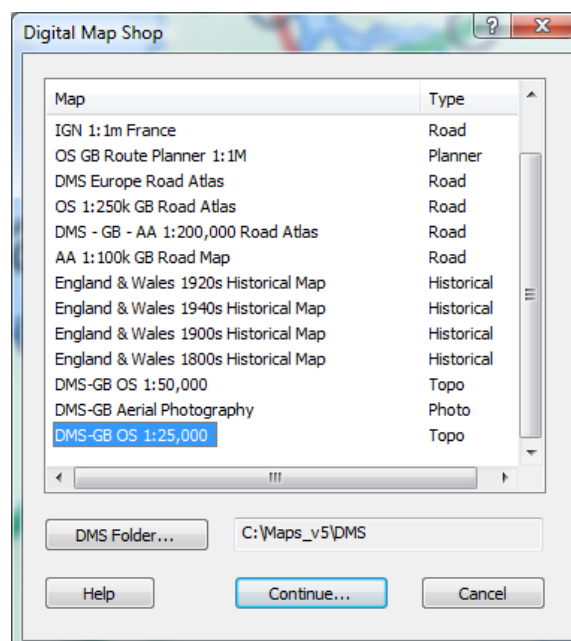


4. Once you have created your route, right-click on one of the legs of the route and choose **Digital Map Shop** from the menu.

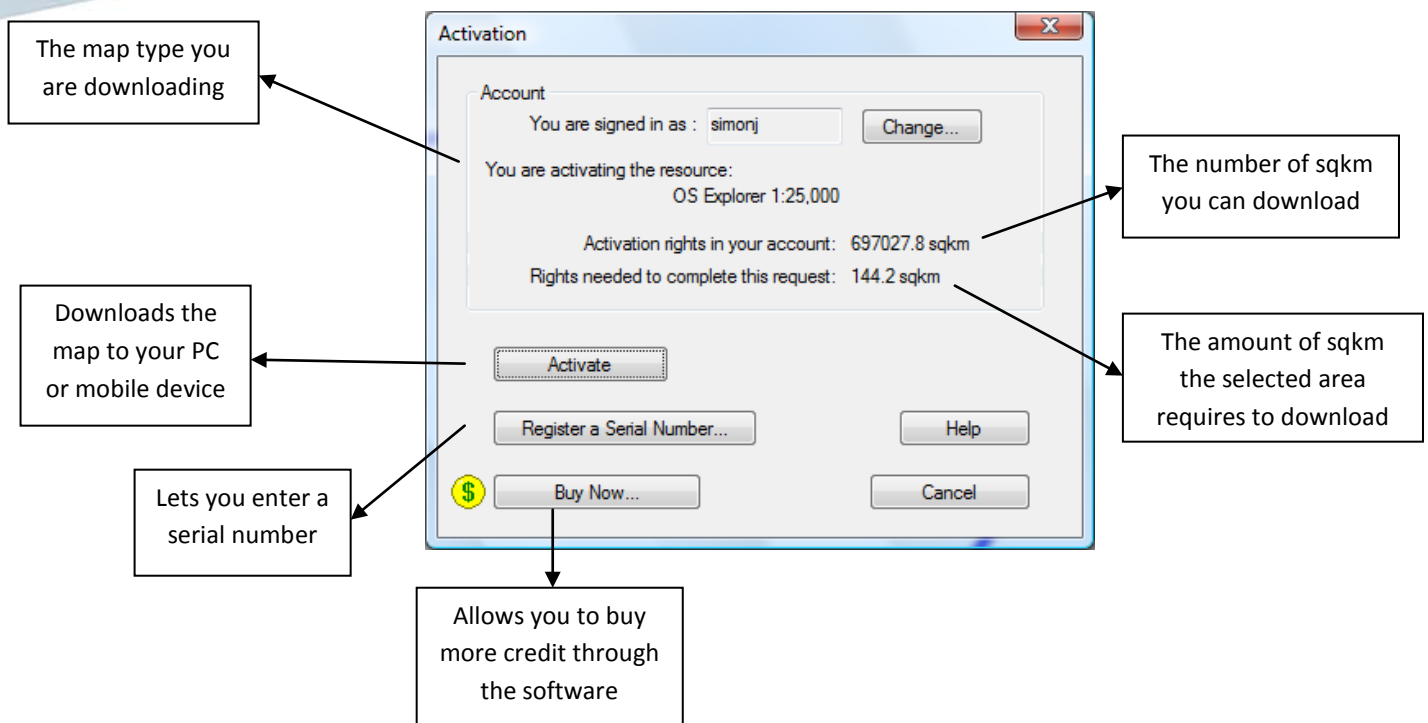


N.B If Digital Map Shop is greyed out and not selectable, this will be because your route is not an enclosed route. Right-click on the route and click Delete and then draw the route again.

5. A list of maps will appear showing maps that can be downloaded for your chosen area. Pick the maps that corresponds with the product you have purchased (or wish to purchase) and click **Continue**.



6. If you are not already signed into your Memory-Map account the software will ask you to do so. If you are new to Memory-Map or just have updated your software and do not yet have an account click the Create New Account button and follow the onscreen instructions.
7. Once you are signed into your account the Activation window will be displayed, similar to the one below.



If you have purchased a Digital Map Shop product on disc then click **Register A Serial Number** and enter your serial number. Your credit will be transferred to your account and updated accordingly. If you do not have a serial number and wish to purchase credit directly through the software, click **Buy Now...** and follow the onscreen instructions. Your credit will be updated once the purchase is complete.

If you are happy this is the area you want to download click the **Activate** button and the map will be downloaded and the credit removed from your account.

If the Activate button is not visible then this will mean you do not have enough credit to download the area you have selected. Either click **Cancel** and resize your area or purchase more credit.

Important: it is not possible to refund or recover credit once you click the Activate button, so ensure this is the area you want to download before proceeding.

Viewing a DMS Map on your PC

To view your downloaded map on your PC please follow the steps below:

1. Click **Map > Map List** and select a basemap that covers the area you downloaded, such as the OS 1:1M Route Planner or OS 1:250k GB Road Atlas. Move this map so it covers the same area as your downloaded map.
2. Right-click on the basemap where your downloaded map should be and select **Maps at Cursor** and then your DMS map from the list. Your downloaded map should now be displayed.

Sending and Activating DMS Maps on a Mobile Device

Digital Map Shop maps can be viewed on a Pocket PC or Smartphone running the Windows Mobile operating system, and the Adventurer 2800 and 7000 GPS.

Digital Map Shop maps can either be unlocked on the storage card, or on the device itself. We recommend activating maps on the storage card itself as this allows you to use the map in future devices, should you change your Pocket PC or phone. With the Adventurer 2800 and 7000 maps can only be activated on the SD card.

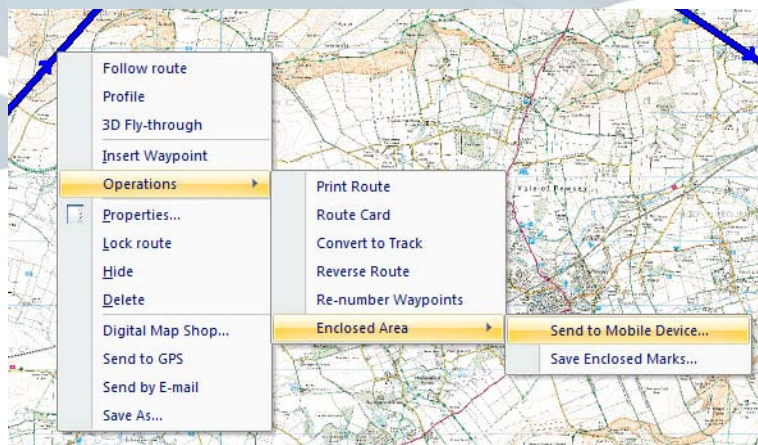
To send and activate maps on a storage card requires a card reader attached to your PC. The Adventurer 2800 and 7000 operate as card readers when connected to your PC so one is not required if using these devices.

Sending maps to a Pocket PC/Smartphone

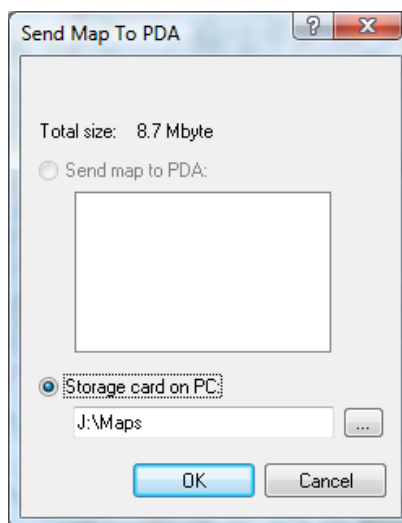
1. Open the downloaded map on your PC that you would like to send to your PDA.
2. Draw a route around the area you wish to send to your PDA. The route must be an enclosed route so that the last waypoint finishes on top of the first one.




3. Right-click on one of the legs of the route and select the menu option **Operations > Enclosed Area > Send Enclosed Area**.



4. A window similar to the one below will appear.



Click **Storage Card on PC** and then the  button. Choose the drive that contains your storage card and click **OK** and then **OK** again.

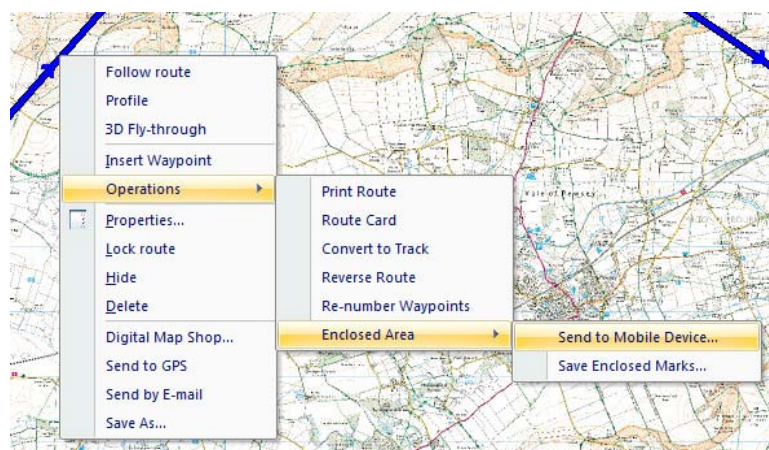
The map needs to be activated on your PDA the same as on your PC. Click the **Activate** button and the map will transfer to the card.

Sending maps to the Adventurer 2800 and 7000

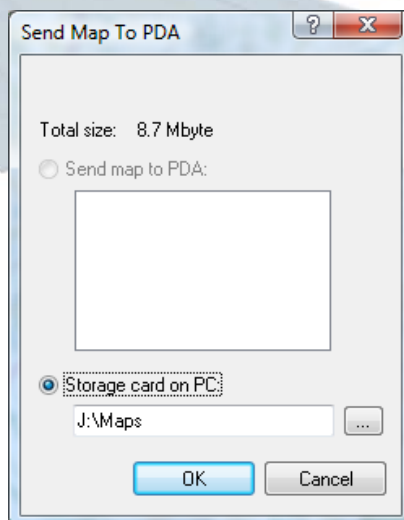
1. Connect the Adventurer 2800 or 7000 to the PC with the supplied USB cable. On the Adventurer 2800 tap the **USB Mass Storage** button to put the device in USB mode (the 7000 will connect automatically).
2. Open the downloaded map on your PC that you would like to send to your Adventurer 2800/7000.
3. Draw a route around the area you wish to send to the device. The route must be an enclosed route so that the last waypoint finishes on top of the first one.




4. Right-click on one of the legs of the route and select the menu option **Operations > Enclosed Area > Send Enclosed Area**.



5. A window similar to the one below will appear.



Click **Storage Card on PC** and then the  button. Choose the removable drive that contains the SD card in your device. It can be identified as it will contain folders called Memory-Map and Maps amongst others.. Select the **Maps** folder and click **OK** and then **OK** again.

The map needs to be activated on the SD card the same as on your PC. Click the **Activate** button and the map will transfer to the card.

Opening a DMS Map on a Mobile Device

1. Start Memory-Map on your device and go to the Map List and tap the **Refresh** button.
2. Open a basemap and scroll the map to the area covered by your download map.
3. Tap and hold on the map and select the appropriate DMS map from the list and it will be displayed on the screen.