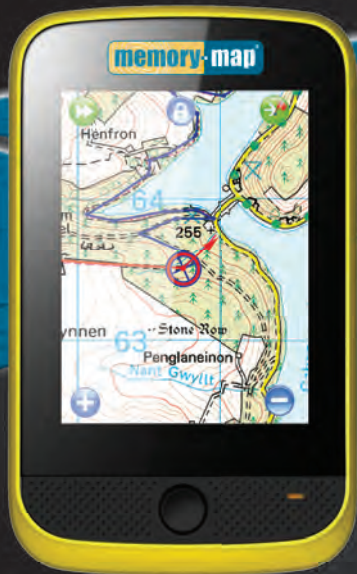


memory·map[®]

Start here, go anywhere[™]



Adventurer 3500

Quick Start Guide

Enabled
by

 Ordnance
Survey



Getting Started

Memory-Map®

Tap MAPS icon to launch Memory-Map application

Add-on Apps

Choose from a range of add-on apps such as SatNav*

Lanyard

Attachment for strap and stylus

Battery / Bike mount

To change battery or affix bike mount, ensure Adventurer is clean and dry, slide clip to 'Unlock' and gently lift battery cover
Swap the battery and replace the cover or fit bike mount cover in its place

Settings

Customise settings such as Volume, Backlight and Powersave for optimum performance

Picture Viewer

Store and view photos

On / Off

Push button to switch Adventurer 3500 on and off

microSD card slot

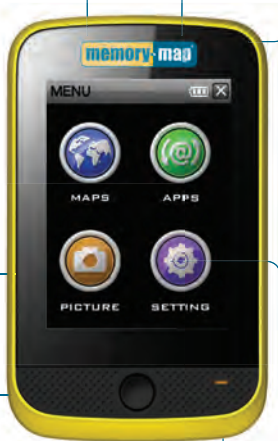
Plug & Play map cards and applications*

mini USB port

Charge & PC interface

Battery Charging light

Red whilst charging
Green when charged



* add-on apps and map cards sold separately

Using Memory-Map



GPS Lock

Tap to lock Position icon to centre-screen & activate moving map display

Go to mark



Displays a list of nearest marks and waypoints to your location
Tap your choice to begin navigation & tracking



Menu

View expanded menu options
Overlay & Settings
Map List
Information
Add Mark
Data display

Heading


Displays direction arrow to next mark or waypoint

Position



Your current location and direction of travel
Tap GPS Lock feature to show position on centre-screen

Navigation Display

Displays navigation information to next mark or waypoint
Tap & Drag to move window or tap and hold bottom right corner and move to resize window
Toggle  or drag window off screen to close



Zoom in

Tap to zoom in
Multiple taps scales in to next map layer

Scale Bar

Scale / distance indicator
Toggle on/off in Overlay & Settings menu

Zoom out



Tap to zoom out
Multiple taps scales out to next map layer



Extended menus & information



Settings & Overlay Options

View map list and place name search
Create, show, hide or search overlays
Manage settings including units, alarms,
and time zone
View GPS status
Help topics & Licence Management



Menu

Tap to return to standard menu



Info

Display GPS status

Position Display

Displays speed, bearing, altitude and
position. Customise units in Settings
menu

Tap & Hold GPS position  or use
Settings  > **GPS** > **Position**

Tap & Drag to move or resize window



to close



Map List



Displays a list of available maps
at current location

Tip : Tap & Hold on the screen
also accesses this menu

Exit



Tap to exit Memory-Map
Saves all overlays and returns
to startup menu

Data Display



Turn on/off to display position
data when tapping screen

Change position format in
Settings & Overlay Options 

Add Mark




Place a mark anywhere on the
map with a single tap

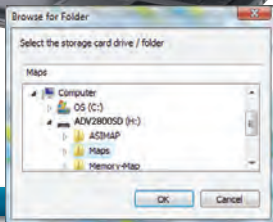
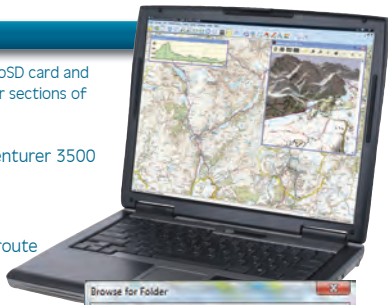
Map Scrolling

Tap & Drag on screen
to scroll the map

Adding maps


Choose from a wide range of additional maps pre-loaded on microSD card and simply swap cards in or out as you need them, or choose whole or sections of map from your Memory-Map v5 collection on your PC.

- 1) Turn on Adventurer and view main menu. Connect Adventurer 3500 to PC using USB cable provided.
- 2) Open Memory-Map on your PC.
- 3) Open the map you want from your map list.
- 4) Draw a route around the area you want, right click the route and use **Operations > Enclosed Area > Send to Mobile Device**. Alternatively, scroll / zoom the map to the area you want and select **Mobile Device > Send Map or Send Visible Map Portion**.
- 5) Name the map section eg. Sherwood Forest, 1:50k, select 'Storage card on PC' and click . Select '**ADV3500SD**' from the drive list and choose the **Maps** folder. Click **OK**.

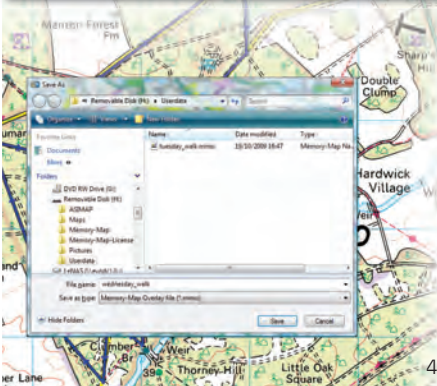


Share routes, tracks & waypoints

Uploading and downloading information between Memory-Map and the Adventurer 3500 is easy. Share routes, tracks, waypoints and other POIs quickly and simply.

- 1) On Adventurer 3500 tap the Settings & Overlay icon 
- 2) **Overlay > Save As...** and name your overlay.
- 3) Connect to PC via USB. Tap **USB mass storage**
- 4) Open Memory-Map on PC and use the **Overlay > Import Memory** menu. Browse to the **Userdata** folder on the '**ADV3500SD**' storage card on your computer.
- 5) Click **Open**. Select the .mmo overlay file.
- 6) See the Memory-Map Installation Guide for details on managing your overlays.

To send overlays from PC to Adventurer 3500 simply right-click on the route or mark and save directly to the **ADV3500SD > Userdata** folder on the storage card.



For a full list of accessories and mapping visit
www.memory-map.co.uk/adventurer

To download a detailed User Guide for your Adventurer 3500 visit
www.memory-map.co.uk/userguide

For technical support, warranty claims or repairs visit
www.memory-map.co.uk/support

WARRANTY

Important: For ALL warranty claims, faults and repairs, please contact Memory-Map Support direct at www.memory-map.co.uk/support. Do not return your GPS to your retailer. Your Adventurer GPS is warranted for one year from the date of purchase from all defects that occur with normal use. Within this period Memory-Map will repair or replace your GPS except for failures due to abnormal use, accident, unauthorised alteration or repairs. For full warranty terms and claims please visit www.memory-map.co.uk/support



Start here, go anywhere

For private, non-commercial or educational use only. Business use licenses available. Call for details. Minimum System Requirements. **PC:** Microsoft Windows 7, Vista or XP. **Digital Map Shop:** Broadband, WiFi or 3G connection recommended. Additional download charges may also apply – check with your ISP for details.

© 2010 Memory-Map Europe, part of EVO Distribution Ltd.

Units 3-4 Mars House, Calleva Park, Aldermaston, Berkshire, RG7 8LA

All rights reserved. All trademarks acknowledged.