

memory-map®

Start here, go anywhere™

Adventurer 3500

***"Very easy to use
with amazingly fast
screen compared
to others."***

Graham Thompson,
Trail Magazine

User Guide



Introduction

Welcome to the Adventurer 3500. This manual is designed to walk you through the features of the Adventurer 3500 and how to get the most from your new GPS.

If you want to get using your GPS straight away please take a few moments to read through the Quick Start guide to familiarise yourself with the GPS and how it operates.

When you are ready, this manual will walk you through the advanced features of the GPS, including how to download routes and maps from your PC to the Adventurer 3500.

Contents

Adventurer 3500	
Quick Start Guide	Page 3
Icons & Menus	Page 4
Extended Menus	Page 5
Using Adventurer 3500	Page 6
Viewing Maps	Page 6
Viewing GPS Position	Page 6
Routes, Marks & Tracks	Page 7
Find Places	Page 9
Menu Options	Page 9
Device Settings	Page 10
Power & Battery Settings	Page 10
Using Adventurer 3500 with Memory-Map on your PC	Page 11
Connecting to PC	Page 11
Transferring routes, tracks & marks to/from Adventurer	Page 11
Sending standard maps to Adventurer	Page 12
Sending Digital Map Shop maps to Adventurer	Page 14
Setting up additional microSD cards	Page 16
Support	Page 17



Start here, go anywhere™

USER GUIDE

Adventurer 3500

Quick Start Guide

Want to get using your GPS straight away? This quick start guide will quickly familiarise you with the Adventurer 3500 and its features.

1) Charging the Adventurer 3500

Gently open the flap from the bottom of the GPS and connect either the supplied mains charger or USB PC cable. A red light will illuminate on the GPS to indicate it is charging and then turn green when the battery is fully charged.



2) Turning on the GPS










Hold down the button on the front of the unit and wait for the unit to start up. When the GPS is ready, slide the **Power On** slide button to the right. From the main menu tap the **Maps** button to put the GPS in outdoor mode.

3) Viewing your position

The GPS will begin locking onto your position straight away. When a lock has been acquired the **Padlock** icon will illuminate. Tap the icon to jump to your current location and display it on the map. Your position is displayed with the **Position** icon.

As your position changes, the map will automatically scroll with you. If you want to move the map manually drag your finger or stylus across the screen. You can also use the zoom in and zoom out buttons to make the map larger or smaller.

To view information such as your current speed and heading tap the **Menu** button then the **Settings & Overlays** button and then from the drop-down menu select **GPS > Position**. The window can be moved and resized and closed using the **X** in the top right corner.

-  **Padlock icon**
-  **Position Icon**
-  **Zoom In**
-  **Zoom Out**
-  **Extended Menu**
-  **Settings & Overlays**
-  **Exit**

4) Viewing your track

As you move, the Adventurer 3500 will automatically record where you have been by drawing a track behind you. You can view information such as how far you have been by tapping and holding anywhere on this track and then tapping **Properties** on the menu that appears. You can also view how far you have travelled by a quick press of the button on the front of the GPS. Press this button again to return to the map.

5) Shutting down the GPS

When you have finished using the GPS and wish to turn it off, please make sure you close down the Memory-Map software first by tapping the **Extended Menu** icon followed by the **Exit** icon. You can then turn the GPS off by holding down the front button and selecting **Power Off**.

Alternatively, press the button on the front of the unit and then select **Main Menu** and then turn the GPS off by holding down the front button and selecting **Power Off**.

Icons & Menus



GPS Lock

Tap to lock Position icon to centre-screen & activate moving map display

Go to mark



Displays a list of nearest marks and waypoints to your location

Tap your choice to begin navigation & tracking



Menu

View expanded menu options
Overlay & Settings
Map List
Information
Add Mark
Data display

Heading

Displays direction arrow to next mark or waypoint



Zoom in

Tap to zoom in
Multiple taps scales in to next map layer

memory-map



Scale Bar


Scale / distance indicator
Toggle on/off in Overlay & Settings menu



Position

Your current location and direction of travel
Tap GPS Lock feature to show position on centre-screen

Navigation Display

Displays navigation information to next mark or waypoint
Tap & Drag to move window or tap and hold bottom right corner and move to resize window
Toggle  or drag window off screen to close

Zoom out



Tap to zoom out
Multiple taps scales out to next map layer

Extended Menus



Settings & Overlay Options

View map list and place name search.
Create, show, hide or search overlays
Manage settings including units, alarms, and time zone
View GPS status
Help topics & Licence Management



Menu

Tap to return to standard menu



Info

Display GPS status

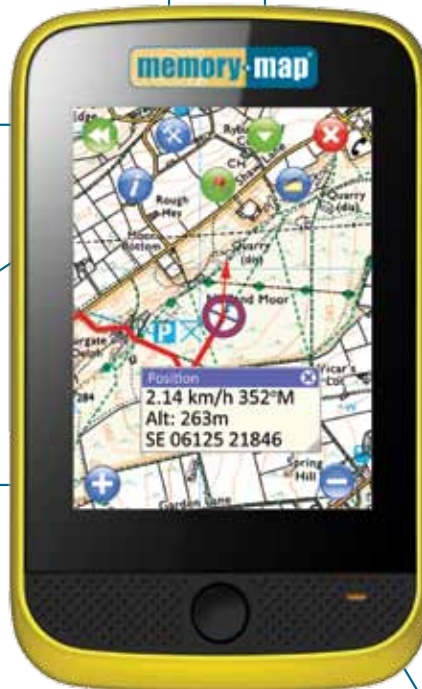
Position Display

Displays speed, bearing, altitude and position. Customise units in Settings menu

Tap & Hold GPS position  or use

 **Settings > GPS > Position**

Tap & Drag to move or resize window  to close



Map List



Displays a list of available maps at current location

Tip : Tap & Hold on the screen also accesses this menu

Exit



Tap to exit Memory-Map

Saves all overlays and returns to startup menu

Data Display



Turn on/off to display position data when tapping screen

Change position format in Settings & Overlay Options

Add Mark



Place a mark anywhere on the map with a single tap

Map Scrolling

Tap & Drag on screen to scroll the map

Using the Adventurer 3500

Turning the GPS on and entering Map mode

To turn the GPS on press and hold the button on the front of the unit and then slide the **Power On** slide button to the right. The Adventurer 3500 will present you with the main menu.

Tap the **Maps** button to put the GPS into Map mode. This is the principal mode for the Adventurer 3500 and will display the last used map.



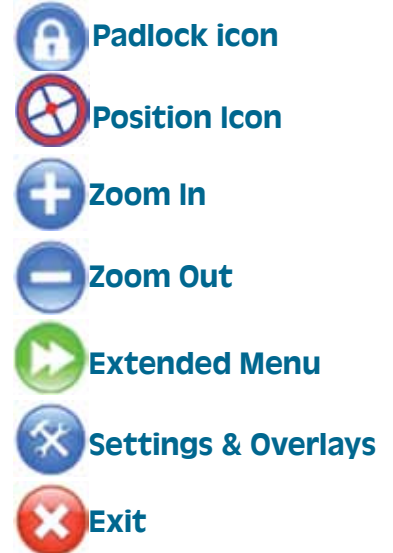
Moving around the map

You can quickly move around the map by tapping and sliding the included stylus, or your fingernail, across the screen. You can zoom into or out of the map using the Zoom In and Out buttons.

Opening a map

To open a map tap the **Extended Menu** icon to display the full row of icons and then tap **Overlay & Settings** to display the drop-down menu. From the list, select **Maps** to display the **Map List**. Tap a map name in the list and the map will open.

TIP: Another way to open maps based on your current map location is to tap and hold on the currently open map with the stylus. A menu will appear showing available maps where you selected, with a tick against the currently open map. To open another map tap on its name in the list and the map will be displayed



Viewing your GPS Position

As soon as you enter Map mode the GPS will begin acquiring a GPS lock. When a lock has been acquired the **Padlock** icon will turn solid. When the button is solid, tap the button and your location will be displayed on the map with the **Position** icon. As you move, the position icon will stay in the centre of the screen and the map will scroll underneath automatically.

To check the current strength of your GPS signal tap the **Extended Menu** icon followed by the **Settings & Overlay** icon to display the drop-down menu. From the menu select **GPS > Satellites** to display current signal information. At least three green bars are required for a GPS lock, with more bars providing a more accurate fix.

In normal use the Adventurer 3500 should be able to obtain a GPS lock within a couple of minutes. If the GPS is being used for the first time, or has not been used for some time then it may take a little longer to acquire your position.

Viewing additional GPS information

The Adventurer 3500 also allows you to view additional GPS information such as your current positional coordinates (in OS grid format or Lat/Lon), your speed, heading, average speed, average heading and altitude. To display this information tap the **Extended Menu** icon, followed by **Overlay & Settings** and then from the drop-down menu select **GPS > Position**.

This window can be moved by tapping and holding on the top blue bar and dragging to the required location, or resized by tapping and holding in the bottom right-hand corner and dragging to the required size. You can also customize the data displayed in this window, as well as the units used (mph, kph etc). Please see

Additional Memory-Map Settings on page **9** for details.



Working with routes, marks and tracks

When using the Adventurer 3500 there are three unique forms of navigational data (called **Overlays**) you can work with – Routes, Marks and Tracks.

Routes are a sequence of connected waypoints of where you intend to go, for example a walk or ride that you have created or downloaded and wish to follow.

Creating Routes

Routes can be created in the Memory-Map software on your PC, or downloaded from popular route sharing websites such as TrailZilla (www.trailzilla.com), and then transferred to your Adventurer 3500. Please refer to the help file in the Memory-Map PC software for details on how to create routes in the PC software. Instructions on how to transfer routes from the Memory-Map PC software to your Adventurer 3500 can be found on page **11** of this manual.

Although you will find it easier to create routes on your PC and download them to the Adventurer 3500, you can also create routes on the GPS itself. To do this first position the map where you want the route to begin. Tap the **Extended Menu** icon followed by **Overlay & Settings**. Select **Overlay > Create > Route** from the drop-down menu.

Tap on the map where you want the route to begin and then tap the map again where you want the next waypoint to be, and so on. The GPS will automatically connect the waypoints together to form a route and join them with a line. When you have finished adding waypoints double tap the screen when placing the last waypoint and the device will exit route creation mode.

If you have reached the edge of the map and wish to add more waypoints, end the route as described above and then scroll the map so that you can still see your last waypoint and the map area you wish to add more waypoints into. Tap and hold on the last waypoint and then from the menu select **Add WP After** and continue adding waypoints as required.

You can access more information about the route, view a hill profile, add more waypoints or delete the route by tapping and holding on any one of the lines between the waypoints to access the **Route** menu (think of tapping and holding the same as right-clicking the mouse button on a PC).

Following a Route

When you are following a route the GPS will direct you to each waypoint and provide detailed route information, such as distance, bearing and time to next waypoint, estimated time of arrival at the end of the route, distance to the end of the route and more.

To begin following a route, locate the route on screen and then tap and hold on one of the lines between the waypoints. From the menu that appears, select **Follow Route** and the two navigation windows will appear. Provided you have a GPS position, the window on the left will show the direction you need to head to reach the next waypoint, and the box on the right will show the route information.

As you progress through the route the GPS will automatically select the next waypoint, ensuring you are always on course and heading in the right direction.

To stop following a route, simply close both of the navigation windows.

Marks are single waypoints that are not part of a route, for example a mark identifying a meeting point, or the location of a geocache.



Creating Marks

Like routes, marks can either be created on your PC and downloaded to the Adventurer 3500, or created on the GPS itself. Please refer to the help file in the Memory-Map PC software for details on how to create marks in the software. Instructions on how to download marks from the Memory-Map PC software to your Adventurer 3500 can be found on page **11** of this manual.

Creating marks on the GPS itself is easy. Simply move the map to where you would like to drop the mark. Tap the **Extended Menu** option followed by the **Mark** icon (shown above). Now tap on the screen where you would like the mark and you will see a flag added to the map.

You can edit the properties of the mark, such as changing its name, or fine tuning its grid reference by tapping and holding on the mark and selecting **Properties** from the menu. When in the **Mark Properties** window you can change the name of the mark by tapping inside the **Name** box and then tapping the **Kbd** button to access the keyboard. You can use the same method to fine tune the position of the mark, or add notes for the mark, such as the telephone number of a pub. When you are finished editing the mark, tap **OK** to save the changes and return to the map.

Goto a Mark

The Adventurer 3500 can direct you to a mark, giving you the direction to head towards and how far you are from the mark. To use the Goto Mark feature, either locate the mark you would like to head toward, tap and hold on the mark and select **Goto Mark**, or tap the **Mark** button and select the mark you would like to head to.

Two navigation windows will appear, with the window on the left showing the direction you need to head to reach the mark, and the box on the right showing navigation information.

To stop navigating to the mark simply close both of the navigation windows.

To delete the mark tap and hold on the mark and select **Delete** from the menu.

Tracks are essentially a breadcrumb trail of where you have been, as recorded by the GPS. As you move, the Adventurer 3500 will automatically record the track, showing where you have been.

Tracks are automatically recorded by the GPS when you are moving and are represented by a solid line that will appear behind your GPS position. The track will automatically record details on how far you have gone, how long you have been moving, your maximum speed and your average speed.

Tracks can be saved to your PC to review and keep. Please see details on how to do this on page **11**.

Viewing track / trip information

To view details on your trip, such as distance covered, maximum speed and total time moving, tap and hold on the track and select **Properties** from the menu. You can do this as the track is being recorded to see up-to-the-second details, or once you have finished your journey to get an overview of the trip as a whole.

You can also view trip distance information by pressing the button on the front of the unit. Total distance travelled will be displayed on the screen, along with brightness controls and options to put the unit into sleep mode or exit Memory-Map and return to the main menu.

Finding a location by name

If you know the name of a location you can jump straight to it by using the **Find Place** feature. Enter the **Extended Menu** then **Overlay & Settings** and select **Find Place** from the drop-down menu.

The **Find Place** search works on a filter, so the more letters of the place you search for the less results there will be to look through. For example if you typed "Bir" then the search would return hundreds of places all with "Bir" in the name. If you searched for "Birmingham", however, then fewer results will be returned allowing you to quickly locate the place you were searching for.

To search for a place tap in the **Find** box and then tap the **Kbd** button in the bottom corner to bring up the onscreen keyboard. Now, type in your search and then press the **->** button to perform the search. The results will be displayed below.

To display the location on the map simply double tap its name in the list. If you want to automatically drop a mark at the location as well make sure the **Create Mark** box is ticked first.

Finding a location by grid reference

If you know the grid reference (or Latitude / Longitude) of a location then you can display it using the Find Place feature. Follow the steps above to enter the Find Place menu and tap in the **Coordinates** box. Bring up the keyboard and type in the grid reference you want to locate, e.g. SU 62392 51191. Press the **Enter** key on the keyboard and the location will be displayed on the map. If you want to place a mark at the chosen location make sure the **Create Mark** box is ticked first.

Additional Memory-Map Options

Tapping the **Extended Menu** followed by **Overlay & Settings** brings up the drop-down menu providing access to additional options and settings.

Map – View all maps installed on the Adventurer 3500 and open the one of your choice. Whenever you send a new map to the Adventurer 3500, access the map list first and tap **Refresh** to ensure the map list is updated.

Overlay – Manage the overlays (routes, marks and tracks) on your device. Options include the overlay manager, which allows you to work with your overlays, creating and deleting overlays and showing and hiding overlays. You can also open overlays sent from your PC, or save overlays ready for transfer to your PC. Please see page **11** for more details.



Find Place – Search for a location or grid reference. Please see page **9** for more details.

Settings – change settings for the device, including units of measure (mph, kph) and position format (British National Grid, Lat / Lon etc). The Settings options also lets you customise the navigation data displayed when following a route or a mark, and when viewing GPS position information.

GPS – view satellite signal strength and additional GPS information. You can also drop a mark at your current GPS position from here.

License – allows you to check the status of the map licences on your microSD card.

Help – provides a quick refresher about the information in this manual. Perfect for when you are out and about.

Exit – saves all overlay data and then exits map mode, returning you to the main menu. Always use this (or the **Exit** icon) to exit Memory-Map before turning off the device.

Additional Device Options

Additional options for the Adventurer 3500 can be accessed from the Settings button on the main screen when you turn on the GPS. These settings include:

Brightness – Adjust the brightness of the backlight. The brighter the backlight the easier the unit will be able to be seen in daylight. A bright backlight setting will consume more power, however.

Volume – Change the volume level from the internal speaker. You can also turn off the sound made when tapping the screen by setting Touch Tone to off.

Language – Change the language of the main menu. The language in Memory-Map itself can be changed separately, if required.

Touch Calibration – Recalibrate the touch screen if you are finding screen taps have become inaccurate. The screen will be calibrated for you initially, so you do not need to do this unless required.

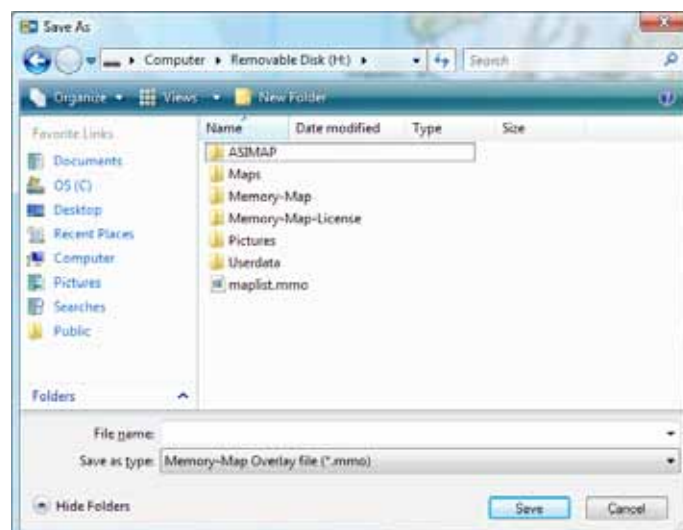
Power Save – Allows you to control whether the backlight or the device turns off after a period of inactivity. Due to the way Memory-Map records your tracklog when running we strongly recommend setting the **Power Down Time to Always On** when using Memory-Map on the device. This feature can be used with other applications available for the device, such as the Golf software. The Backlight feature can only be used in other Apps available for the device.

Information – Provides information on the hardware and allows you to update the device as updates are available.

Charging the device and getting the most from the battery

The Adventurer 3500's battery can be charged using the included mains charger, car charger or USB charger when connected to your PC. For the quickest charge we recommend using the mains charger. The light on the front of the unit will turn red when charging and then turn green when the unit is fully charged.

When using the GPS you can quickly put the unit to sleep by pressing the button on the front of the unit and then selecting Sleep from the menu. When in Sleep mode the Adventurer 3500 will go into a low power state, preserving the battery. When you press the button on the front of the unit the 3500 will go straight into map mode.



Using the Adventurer 3500 with Memory-Map on your PC

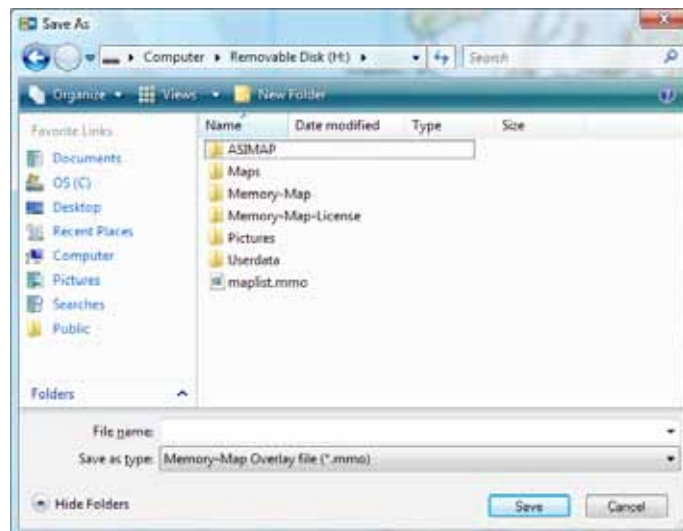
Connecting the GPS to Memory-Map on your PC

Unlike Pocket PCs or Garmin GPS units the Adventurer 3500 is seen by your PC as a removable drive. This means in Memory-Map you **do not** connect or interact with the device using the options under the GPS menu. Maps, routes and tracks can be sent to the device using the steps in the following sections.

Transferring routes, tracks and marks to the Adventurer 3500

Routes, tracks or marks can be transferred from Memory-Map on your PC to the Adventurer 3500 by following the steps below:

- 1) Exit Memory-Map on the 3500 if it is running by tapping the **Exit** button (you may need to tap **Extended Menu** first) and then connect your Adventurer 3500 to your PC with the supplied USB cable. Tap the **Press to Connect** button on the Adventurer 3500 screen and it will be seen by your PC as a removable drive.
- 2) In Memory-Map on your PC, right-click on the route, track or mark in question and choose the **Save As** option.
- 3) In the Save As window choose the **Removable Drive that contains the SD card inside the unit**. It can be easily identified as it will contain a number of Memory-Map folders and a **Userdata** folder as below



Double-click on the **Userdata** folder and give the file a name so that you can recognise it on the device and then click **Save**.

4) Important – Safely remove the 3500 from your PC by right-clicking on the drive in Computer and selecting **Eject** from the menu. If you are using Windows XP you will need to use the **Safely Remove Hardware** option in the system tray to remove the device.

5) Unplug the USB cable from the 3500 and then launch Memory-Map. Tap the **Extended Menu** icon and followed by **Overlay & Settings** and then tap **Overlay > Open**. A list of files will be displayed, select the file you wish to open and it will be displayed on the map.

Transferring routes, tracks and marks from the Adventurer 3500 to your PC

To save your routes, tracks and marks for viewing in Memory-Map on your PC please follow the steps below:

- 1) On the 3500 tap the **Extended Menu** icon and followed by **Overlay & Settings** and then tap **Overlay > Save As** from the menu. Give the file a name using the keyboard button and then tap **OK** to save.
- 2) Exit Memory-Map on the 3500 if it is running by tapping the **Exit** button. Connect your Adventurer 3500 to your PC with the supplied USB cable. Tap the **Press to Connect** button on the screen and the 3500 will be seen by your PC as a removable drive.

3) In Memory-Map on your PC click **Overlay > Import**. In the Open window that appears select **GPS eXchange files (*.gpx)** from the drop down file type box and then choose the **Removable Drive** that contains the SD card inside the unit. It can be easily identified as it will contain a number of Memory-Map folders and a **Userdata** folder.

Double-click on the **Userdata** folder and then open the file you previously saved on your Adventurer 3500. The overlay file will now be displayed on your PC.

Sending maps to the Adventurer 3500

Both existing Memory-Map V5 maps and Memory-Map Digital Map Shop maps can be sent to the Adventurer 3500 and stored on the SD card.

To open maps on the GPS tap the **Extended Menu** icon and followed by **Overlay & Settings** and then tap **Map...**

A list of maps will appear. If you have recently sent a map from your PC tap the **Refresh** button to update the map list. To open a map tap once on the name and the map will be displayed.

Sending Memory-Map V5 Maps (not including Digital Map Shop maps)

If you have existing Memory-Map V5 maps provided on CD or DVD, which are not Digital Map Shop maps, then these can be sent to your Adventurer 3500 in a number of ways. Please note that there is a limit of up to 400MB per map so make sure your maps are below this size when sending to the GPS.

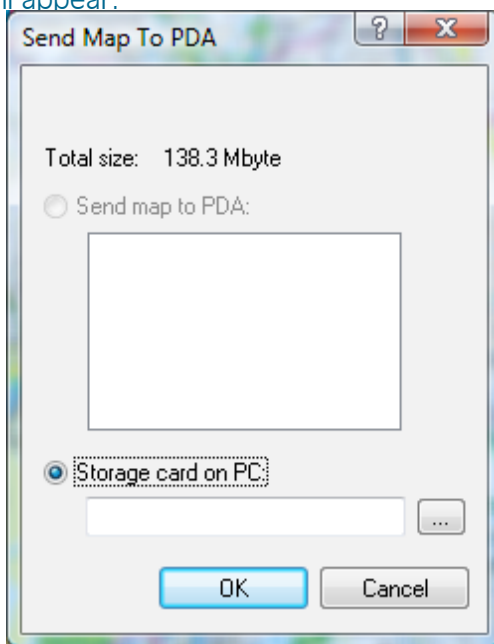
Method 1 – Sending the whole map

If the map is under 400MB in size then you can send the whole map in one go by following the steps below:

1) Exit Memory-Map on the 3500 if it is running by tapping the **Exit** button and then connect your Adventurer 3500 to your PC with the supplied USB cable. Tap the **Press to Connect** button on the screen and the 3500 will be seen by your PC as a removable drive.

2) In Memory-Map on your PC open the map you wish to send and then click **Mobile Device > Send Map...**

A window similar to the one below will appear:



Click the **Storage card on PC** button and then the  button.

In the **Browse for Folder** window choose the Removable Drive that contains the SD card inside the unit. It can be easily identified as it will contain a number of Memory-Map folders and a Userdata folder. Double-click

the Maps folder to select it and then click **OK** to send the map to the device.

3) Important – Safely remove the 3500 from your PC by right-clicking on the drive in Computer and selecting Eject from the menu. If you are using Windows XP you will need to use the **Safely Remove Hardware** option in the system tray to remove the device. Not doing so could corrupt the card data making it unusable.

Method 2 – Sending the visible map portion on screen

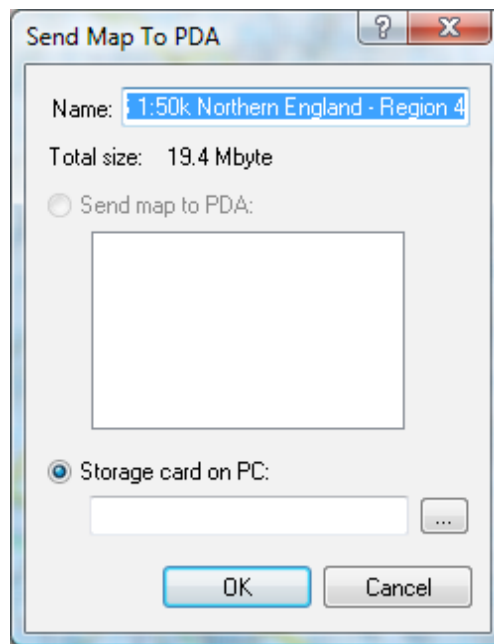
If the map you want to send is over 400MB in size, or you only want to send a portion of it to the GPS then please follow the steps below.

1) Exit Memory-Map on the 3500 if it is running by tapping the **Exit** button and then connect your Adventurer 3500 to your PC with the supplied USB cable. Tap the **Press to Connect** button on the screen and the 3500 will be seen by your PC as a removable drive.

2) In Memory-Map on your PC open the map you wish to send and move to the area you require. You can zoom in or out to adjust the area until you are happy you have the area covered.

3) Click **Mobile Device > Send Visible Map Portion...**

A window similar to the one below will appear



If you wish to give map a name type this into the **Name** box.

Click the **Storage card on PC** button and then the  button.

In the **Browse for Folder** window choose the Removable Drive that contains the SD card inside the unit. It can be easily identified as it will contain a number of Memory-Map folders and a Userdata folder. Double-click the Maps folder to select it and then click **OK** to send the map to the device.

4) Important – Safely remove the 3500 from your PC by right-clicking on the drive in Computer and selecting **Eject** from the menu. If you are using Windows XP you will need to use the **Safely Remove Hardware** option in the system tray to remove the device. Not doing so could corrupt the card data making it unusable.

Method 3 – Sending an enclosed area

To gain more control over the area of map you are sending you can send an area enclosed by a route that you have drawn. To do this please follow the steps below:

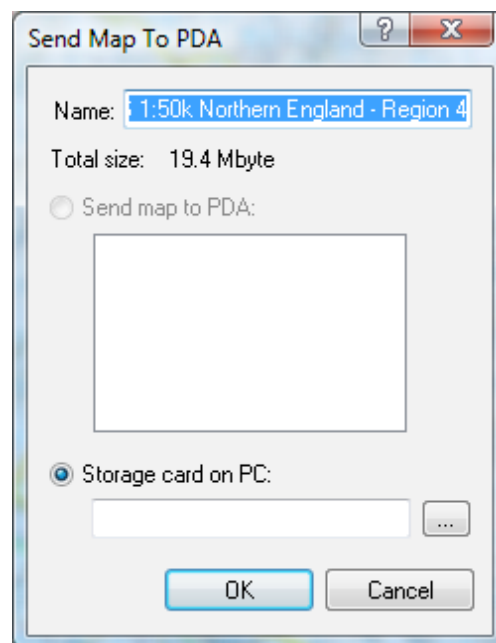
1) Exit Memory-Map on the 3500 if it is running by tapping the Exit icon and then connect your Adventurer 3500 to your PC with the supplied USB cable. Tap the **Press to Connect** button on the screen and the 3500 will be seen by your PC as a removable drive.

2) In Memory-Map on your PC open the map you wish to send and move to the area you require. Click the **Route** button on the toolbar and create a route around the area you wish to send. You can zoom out if you wish so you can see more of the map. While creating a route you can use the arrow keys on your keyboard to move the map around.

When you are finishing your route make sure the last waypoint finishes on top of the first one so that you have made an **enclosed route**.

3) Right-click on the route you have created and select the menu option **Operations > Enclosed Area > Send to Mobile Device...**

A screen similar to the one below will appear:



4) If you wish to give map a name type this into the **Name** box. Please also make sure that the size of the map **does not exceed 400MB**. If it does, click the **Cancel** button and resize your route

Click the **Storage card on PC** button and then the  button.

In the **Browse for Folder** window choose the Removable Drive that contains the SD card inside the unit. It can be easily identified as it will contain a number of Memory-Map folders and a Userdata folder. Double-click the Maps folder to select it and then click **OK** to send the map to the device.

5) Important – Safely remove the 3500 from your PC by right-clicking on the drive in Computer and selecting **Eject** from the menu. If you are using Windows XP you will need to use the **Safely Remove Hardware** option in the system tray to remove the device. Not doing so could corrupt the card data making it unusable.

Sending Encrypted or Digital Map Shop maps to the Adventurer 3500

Digital Map Shop and encrypted maps are different to older maps in that they have to be unlocked on both your PC and mobile device. Digital Map Shop products include the same amount of sqkm Map Credit for your mobile device as for your PC. So, for example if you have 10,000sqkm of OS 1:50,000 Landranger for your PC, you will also have 10,000sqkm of OS 1:50,000 Landranger mapping for your mobile device.

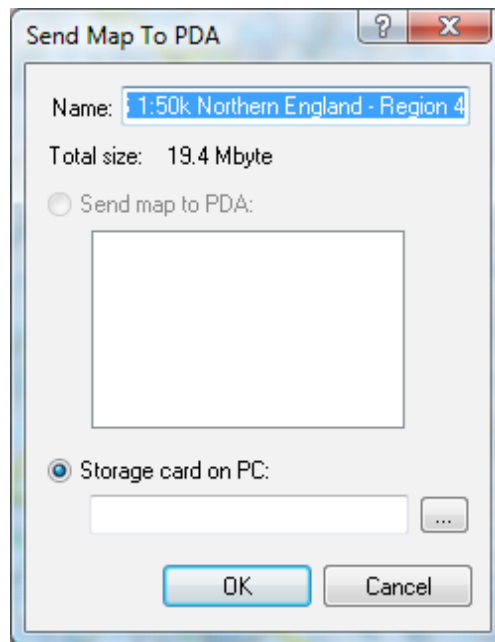
Once you have downloaded and unlocked a map on your PC you can send it to your Adventurer 3500 using the following steps:

- 1)** Exit Memory-Map on the 3500 if it is running by tapping the **Exit** button and then connect your Adventurer 3500 to your PC with the supplied USB cable. Tap the **Press to Connect** button on the screen and the 3500 will be seen by your PC as a removable drive.
- 2)** In Memory-Map on your PC open the map you wish to send and move to the area you require. Click the **Route** button on the toolbar and create a route around the area you wish to send. You can zoom out if you wish so you can see more of the map. While creating a route you can use the arrow keys on your keyboard to move the map around.

When you are finishing your route please make sure the last waypoint finishes on top of the first one so that you have made an enclosed route.

- 3)** Right-click on the route you have created and select the menu option **Operations > Enclosed Area > Send to Mobile Device...**

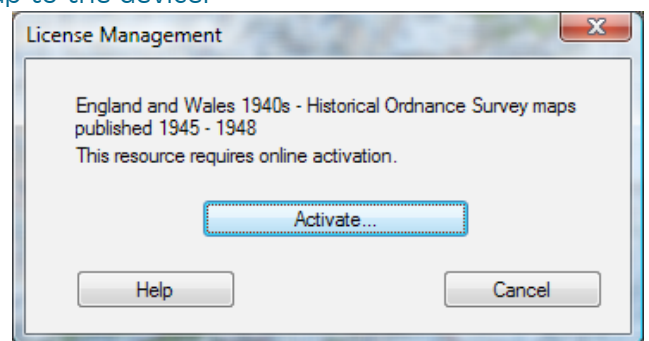
- 4)** A screen similar to the one below will appear:



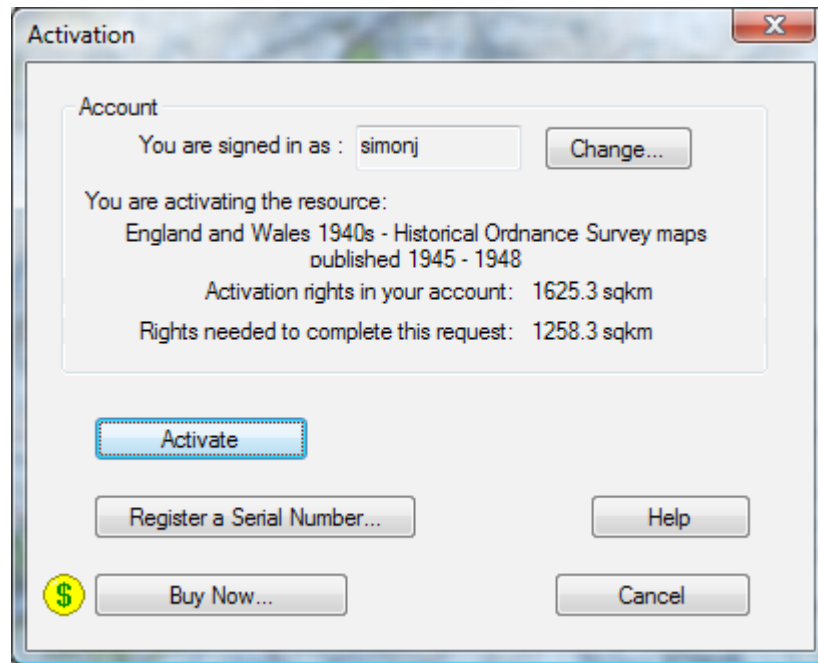
Click the Storage card on PC button and then the  button.

- 5)** In the **Browse for Folder** window choose the Removable Drive that contains the SD card inside the unit. It can be easily identified as it will contain a number of Memory-Map folders and a Userdata folder. Double-click the Maps folder to select it and then click **OK** to send the map to the device.

- 6)** You may be prompted with a window similar to the one here asking you to activate the map. If you are, click the Activate button. This screen will only appear once for each type of map you send to the Adventurer 3500.



7) Digital Map Shop maps need to be activated on your Adventurer 3500 SD card as well as your PC. The following screen tells you much credit you have left to activate on a Mobile Device / SD Card and how much credit the map you are sending to the SD card will use.



If you are happy that this is the area you want to send and you have sufficient credit then click **Activate** and the map will transfer to your GPS and unlock.

If the **Activate** button does not appear this will mean that the area you are trying to send exceeds the amount of credit you have. Check the amounts stated above and click **Cancel** to resize your route and try again.

8) Important – Safely remove the 3500 from your PC by right-clicking on the drive in Computer and selecting **Eject** from the menu. If you are using Windows XP you will need to use the **Safely Remove Hardware** option in the system tray to remove the device. Not doing so could corrupt the card data making it unusable.

Opening and viewing a Digital Map Shop Map on the GPS

To view a Digital Map Shop map on your 3500 please follow the steps below:

- 1) Tap the **Extended Menu** button followed by **Overlay & Settings** and then **Map...** from the list
- 2) Tap the **Refresh** button to update the list and then open either the **OS GB Route Planner 1:1M** or **OS 1:250k Great Britain Road Atlas** by tapping on their names in the list.
- 3) Move the map to the area covered by the Digital Map Shop map you just sent. Tap and hold on the screen where your map will be and select its name from the list of maps that appears. Your Digital Map Shop map will now be displayed.

Setting up a new SD card to use in the Adventurer 3500

If you wish you can use a larger SD card, up to 16GB, in the 3500 to install your existing disc based maps onto. Please note that you cannot copy the included full OS 1:50k Great Britain map onto a new SD card, as this map is locked to the original card for security reasons.

To setup the new SD card with the Adventurer you will need to do the following:

1) Copy the following folders from the original SD card to the new SD card.

2577

ASIMAP

Pictures

Userdata

The best way to do this is to copy the files from the original SD card to a folder on your computer and then copy the contents of this folder to the new SD card.

2) Licence the new SD card to work with the GPS. To licence the SD card please do the following:

- Insert the new SD card in to the Adventurer 3500 and start Memory-Map on the device. A message will appear stating "The license for resource GPS Features has not been activated". Tap **OK** and then exit the program by tapping the **Extended Menu** button and then the **Exit** button.
- Connect the 3500 to your PC and then tap the Press to Connect button. Open Memory-Map on your PC and then click **Help > Licence Management** and then the **SD Card...** option.
- In the window that appears click **GPS Features** in the list so that is highlighted and then click **Activate**. If you are asked to log in enter your user name and password. You may be asked to give the SD card a name so that you can recognise it later, so fill in a unique name for the card if prompted.

If you are asked to **Register A Serial Number** enter the one from the **Software Installation Guide** in the Adventurer 3500. Once activated, the status of **GPS Features** should change to **Full, No Expiration**.

Your card is now ready to use with your Adventurer 3500!

Please be aware that the serial number included with the Adventurer 3500 will allow you to activate the GPS functionality on up to **two SD cards**. If you wish to move the licence from one SD card to another you can do so by logging into the website below and clicking the **Migrate Licence** button.

www.memory-map.co.uk/activate

Important - If your Adventurer included an SD card with mapping on, or you have purchased an SD card with mapping on, then this mapping data cannot be transferred to a new SD card. The map copyright holders require mapping to be encrypted and locked to the SD card it was purchased on, meaning the map cannot be moved or copied to a new SD card.

Additional ready-to-use SD cards, which are pre-licensed are available to buy direct from Memory-Map from **www.memory-map.co.uk/adventurer**

If you require additional help or support please visit **www.memory-map.co.uk/support**