

Memory-Map Navman GPS Installation Instructions

PLEASE COMPLETE THIS CHECKLIST TO ENSURE CORRECT OPERATION OF YOUR NAVMAN GPS 3000 WITH MEMORY-MAP POCKET NAVIGATOR

DO NOT INSERT YOUR IPAQ INTO THE GPS SLEEVE DURING STEPS 1 and 2.

Step 1. iPAQ ROM Upgrade (36xx iPAQ only)

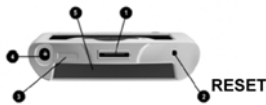
The Navman GPS 3000 requires iPAQ ROM version 1.77 or later. Some 3630 and 3660 iPAQs will require a ROM upgrade, newer iPAQs such as 3760, 3850 & 3870 do not need the upgrade. To check your current ROM version: tap **Start > Settings** then select the **System** tab, now start **Asset Viewer** and tap the + symbol next to **Version** to display the **ROM Revision**. Eg 1.77.00 ENG

If you do not have version 1.77 visit www.compaq.co.uk to download the latest upgrade.

Step 2. Install the Navman GPS driver to your iPAQ

Insert the CD supplied and locate the **Navman GPS 3000 Drivers** folder. Open **Navman_driver.exe** and follow the onscreen help to install the GPS driver to your iPAQ.

IMPORTANT: When the driver installation has completed we recommend performing a system reset. To do this tap **Start > Settings** then select the **System** tab, now tap **Memory** then the **Running Programs** tab and finally tap



Stop All. You can now reset your iPAQ by using the stylus to briefly press and release the **Reset** button on the bottom of the unit.

You can now insert your iPAQ into the Navman sleeve.

Step 3. Check that you have installed Memory-Map Pocket Navigator version v2.5.6 or later

If you have not already installed Memory-Map Pocket Navigator follow the installation instructions supplied with your software. Then check your version as explained below.

IMPORTANT: The Navman GPS 3000 requires Memory-Map Pocket Navigator v2.5.6 or later. To check the current version on your iPAQ start Pocket Navigator then tap **Menu > Help > About...**

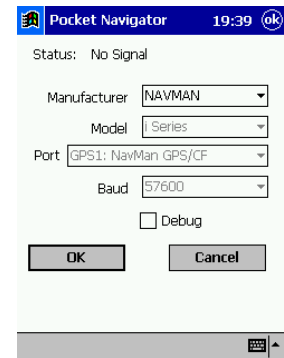
Check your CD or download the latest Memory-Map Navigator version FREE from www.memory-map.co.uk

Step 4. Setup in Memory-Map Pocket Navigator

Start Memory-Map Pocket Navigator on your iPAQ.

Tap **Menu > GPS > Setup...**

Select **Manufacture = NAVMAN** from the drop down list. All other settings will now be automatically configured.



Step 5. Using with Memory-Map Pocket Navigator

The Navman installation process is now complete.

Refer to the Memory-Map Pocket Navigator printed Installation Instructions and onscreen Help files to learn about copying maps to your iPAQ and to use the advanced navigational features.

IMPORTANT: Clean surfaces with the alcohol pad before using the Suction Mount. In temperatures below 15°C warm surface and mount before use.



FREQUENTLY ASKED QUESTIONS

GPS: No Signal is shown when I click on the GPS information button? *Navman is sending an 'invalid' position warning to Pocket Navigator - remember GPS will not work indoors*



I get an error message - **GPS: Can't open GPS1: Error 55**. *Navman only works with one GPS software application at a time. Close other GPS applications and restart Pocket Navigator. Note: To close other applications which do not have an Exit option tap **Start > Settings** then select the **System** tab, now tap **Memory** then the **Running Programs** tab and finally tap **Stop All**.*

For more help:

With Memory-Map Pocket Navigator visit www.memory-map.co.uk

With Navman GPS 3000 contact support@navman.co.uk or visit www.navman-mobile.co.uk