

# Memory-Map **TECH SUPPORT** **Bulletin #T15**

## **Licensing the SD card for an Adventurer Pilot 7000**

Due to a technical issue a number of Adventurer Pilot 7000 units have left the warehouse with unlicensed SD cards.

To resolve this issue please follow the steps below:

1.) Switch the 7000 on and tap the Memory-Map icon. A message will appear alerting you that the serial number of the SD card does not match the SD card in the device. Tap the **Yes** button to overwrite the serial number with the correct number and then connect the device to your PC with the supplied USB cable.

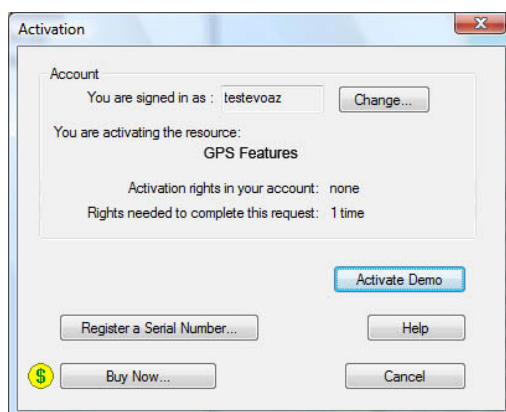
N.B. If you have already tapped **No** and can't get the above message to reappear when you start Memory-Map please see the instructions at the end of these steps.

2.) Start Memory-Map on your PC and click the menu option **Help > Licence Management > SD Card...**

3.) Click on **GPS Features** in the list to highlight it and then click the **Activate** button.

4.) If prompted, sign into your account with your username and password. If you have not yet created an account click the **Create New Account** button.

5.) If prompted with a screen similar to the one below click the **Register a Serial Number** button and enter the serial number included on the back of the instructions in the box. (If this screen does not appear do not worry, this just means that you have already entered this serial number).



6.) Repeat this process for **CAA Aeronautical Charts** only this time you will not need to enter a serial number.

The SD card is now ready to use. Disconnect the USB cable from the device and then turn it on again and run Memory-Map as normal.

Please accept our apologies for any inconvenience caused.

If you have already tapped No to the message mentioned in step 1 then you will need to manually delete the serial number file from the SD card. This is a hidden file on the SD card called serialnum.mmcid.

To display hidden files and folders on your PC you will need to perform the following:

**Windows XP:** Click **Start > My Computer** and then on the menu click **Tools > Folder Options**. Click the **View** tab and then under "Hidden files and folders" make sure **Show hidden files and folders** is selected and click **OK**.

**Windows Vista/ Windows 7:** Click **Start > Computer** and then on **Organize > Folder and Search Options**. Click the **View** tab and then under "Hidden files and folders" make sure **Show hidden files and folders** is selected and click **OK**.

Next, open up My Computer and double-click on the drive that contains the SD card. On the root of the SD card will be the file **serialnum.mmcid** – delete this file and then follow steps 2-6 at the beginning of this bulletin.