

Memory-Map's Digital Map Shop™ is the quickest and easiest way to buy the area and scale of map you want. First **Choose** the type of map, then **Draw** around the area you want and finally activate and **Download** your new map data directly over the internet to your PC or Pocket PC. To start using Digital Map Shop, just follow the simple instructions below.

### Installation of Memory-Map V5.3.1 or later.

Insert your disc and begin by installing Memory-Map V5 software by following the on screen instructions. If this is your first Memory-Map product you will need to create an account by selecting **Help > License Management** from the main menu. If you are an existing user or have already created an account continue to **1**.

### Creating an Account

To create an account click **Sign In** and then **Create Account**. Fill in all the relevant details and a new account will be created with Memory-Map for you to activate resources, such as printing or GPS programming, and subsequent purchases. Follow the on-screen instructions to name your computer to identify it for later map or features activation.



### Essential Information

Your serial number for this Digital Map Shop product is supplied below. Please use the space provided to record your username and password which you will need for any future Memory-Map registrations or if you need to contact Memory-Map at any time.

User Name :

.....

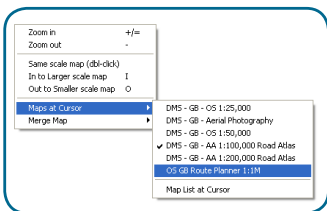
Password :

.....

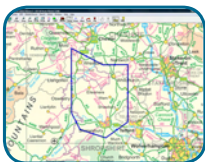
## 1 Choose the type of map

You are already well on the way to discovering Digital Map Shop. Please check your serial number above for the details of the product you have purchased. For example, if you have purchased a Digital Map Shop Great Britain Top-Up 25,000km<sup>2</sup> this provides you with up to 25,000 square kilometres of Ordnance Survey® Landranger® 1:50,000 mapping of your choice.

To define your map area bring up the **Map List** by selecting the **Map** button on the toolbar and double-click on the map that corresponds with the product you have purchased. If you have not already done so, you will now be asked to sign in to your account and to provide the serial number listed above.



**NB:** You can select and download one complete area up to the maximum you have purchased. Alternatively choose several smaller areas or choose a pre-defined area from our Best Sellers list.



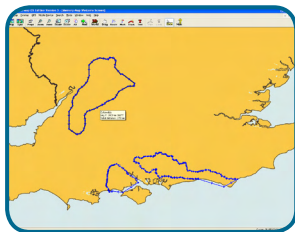
## 2 Draw around the area you want

Digital Map Shop allows you to download map areas as you need them. Each area you download will appear on a single seamless map of the country with white space for the areas not yet downloaded. This way you can build your map collection at any time and even fill in the gaps between areas previously downloaded.

Start by right-clicking on the map and selecting **Maps at Cursor > OS GB Route Planner 1:1M**. Use the **Route** tool to draw an enclosed shape around the area of mapping you would like to download. The last waypoint needs to finish exactly on top of the first one in order to create the area.

Once you are happy with the area you can find out its size by selecting **Mode > Units > Metric** and then right-click on the route you have drawn and select **Properties** from the menu. In the middle of the route properties window will be the area of the route you have drawn, displayed in square kilometres.

Now right-click back on the map and select **Maps at Cursor > [Scale & Country]** and select the country, scale and map you have purchased, eg **DMS - GB OS 1:50,000**.



To choose a pre-defined area instead of creating your own select **Overlay > Import** and navigate to the following location on your computer: **C:\Maps\_v5 \ DMS Overlays**.

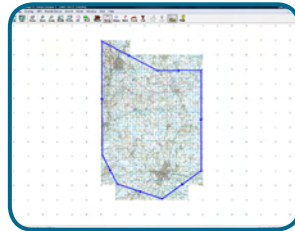
Select the file **DMS\_overlays**. Click the **Props** button on the toolbar and in the **Properties** window expand the **Digital Map Shop Best Sellers** category in the left hand column. Choose an area, or several areas and click **View**. Use the **Zoom Out** tool to get an overview of these predefined areas to choose the one you want.

Right-click on the map near one of the route lines and click the menu option **Maps at Cursor > [Scale & Country]** depending on which package you have purchased.

### 3 Download to your PC

Your route will display on a white background with a grid of cross-hairs indicating **Map Tiles**. If your route does not appear, drag the map, use the zoom tools or cursor keys until you can view it on the screen.

Maps are divided and downloaded in whole map tiles. Your selected map area will encompass all map tiles that your route passes through making your final map selection slightly larger than your total route area. To make sure you do not download any unnecessary tiles, to select additional tiles or to make the area larger or smaller you can click on and drag the waypoints of your route within the tiles you want. Remember to check your route area in the **Properties** menu to ensure it is not larger than your **Top-Up** area allows, and also that your route does not encroach into any tiles you don't want as this could exceed your **Top-Up** value.

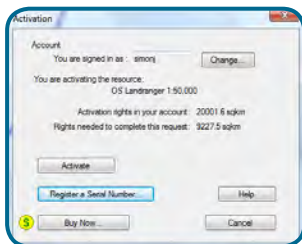
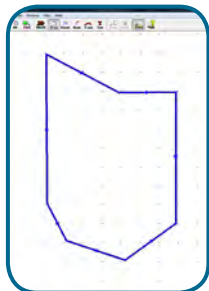


**TIP** : Selecting the **Map > Automatic Download** option will automatically download encrypted map data replacing the cross-hair white background map. This map will be a low-resolution pixel version of the map and makes activating maps quicker. You can turn this option off again in the same way.

When you are happy with your selection, right-click on one of the route lines and select **Operations > Activate Enclosed Map**. If you are not already signed in, Memory-Map will prompt you to sign in to your account and your selected map portion will be downloaded to your hard drive. Once completed, your unlocked and activated map will be ready for you to use.

**IMPORTANT** : If the activation window indicates that you need additional **Activation Rights** or map credits to download the selected map area, then your route, or the number of grid squares it covers, exceeds the value of your **Top-Up voucher**. You can either make your route smaller, making sure it doesn't stray into any unnecessary map tiles as discussed above, or purchase additional credits using the **Buy Now** button.

**IMPORTANT INFORMATION** - Memory-Map Digital Map Shop requires internet access for activating maps. For downloading maps a Broadband, WiFi or 3G connection is recommended. Internet or phone service provider charges may also apply. Check with your service provider prior to download. Memory-Map cannot be held liable for any additional charges incurred.



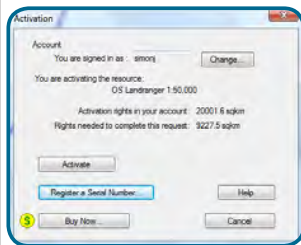
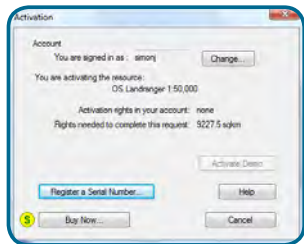
## The quickest and easiest way to buy your maps

Now your Digital Map Shop account is set up, you can purchase additional maps to expand your Memory-Map collection. Memory-Map offers the widest range of maps available and with Digital Map Shop™ you can customise the maps in your collection to suit you. From Ordnance Survey and A-Z maps for the UK to maps of France, Europe and other countries as well as Aerial Photography.

You can purchase additional maps in a number of different ways:

### Digital Map Shop Top-Up Vouchers - pre-paid credits available from your favourite retail store

Top-Up Vouchers add more map credits, known as *Activation Rights*, to your Digital Map Shop account. The type and quantity depend on the voucher you purchase, eg. GB Top-Up 1:50,000 scale Ordnance Survey, 25,000km<sup>2</sup>. Check the product descriptions to make sure you're choosing the right map type for where you want to explore and what you want to do. To activate a new map area with a new voucher, simply select the area as per steps 1-3 and click 'Register a Serial Number' in the activation window and follow the on screen instructions.



### Digital Map Shop - Top up your map credits online

You can also purchase additional Activation Rights from within your Memory-Map software. Start by selecting and drawing the area of map you require as per **Step 2** of the Install Instructions. Then right-click on the route and select **Operations > Activate enclosed map**. An activation screen will display the remaining *Activation Rights* in your account and the amount of km<sup>2</sup> needed to purchase your map selection. To Top-Up your account click **Buy Now** which will take you to the Memory-Map Digital Map Shop online. Follow the online instructions to choose and pay for your map credits. When you have finished select the **Activate** option to activate and download your new map area.

### Memory-Map Digital Map Shop™ on your Mobile Device

You can install Memory-Map on your mobile device using a Microsoft ActiveSync or Windows Mobile Device Center connection. Connection your device, start Memory-Map on your PC and select **Mobile Device > Install Pocket Navigator**.

### Sending maps & routes to your Mobile Device

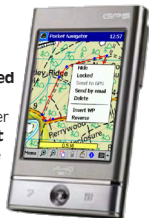
You can use the following options to transfer maps to a mobile device:

To send a complete map - **Mobile Device > Send Map...**

To send a map area shown on your PC screen - **Mobile Device > Send Visible Map Portion...**

To send an area enclosed by a route - Right click on a route line and select **Operations > Send enclosed map to Mobile Device...**

**Tip:** Send a complete large area Route Planner map to your Pocket PC so you always have a map wherever you are. Swap waypoints, routes and tracks with your mobile device using the **Mobile Device > Import Data** and **Export Data** commands. The amount of mapping you can send to a device depends on the available space on its memory card.



### Using Digital Map Shop out and about on your Pocket PC

If your Pocket PC has a 3G or WiFi connection then you can download maps from Digital Map Shop on the go. To get started use the **Mobile Device > Send Map** option on your PC to send each type of map that you want to your Pocket PC. Using **Menu > Map** on your Pocket PC you can select the map you want to download when you're out and about. Use the **Menu > License > Activate Visible Map** to download the map data for the current area on the screen.

**TIP:** Press the **GPS Lock** button to quickly see your location and work out the area you need to download or use a **Route Planner** map then **Scale In**.

**TIP:** Top-up your map credits in advance using **Help > Licence Management** option and selecting **Online Info** to go to Digital Map Shop and select **Buy Licences** to choose the type and quantity of mapping you want.

### Technical Support

Memory-Map includes comprehensive help files, frequently asked questions and trouble-shooting guides that you can access via the **Help** menu on your Memory-Map tool bar. Further technical support is available at [www.memory-map.co.uk](http://www.memory-map.co.uk) or you can call our support team on +44 (0)844 811 0955 between 10.00am and 4.00pm, Monday to Friday.

# Using Memory-Map – Quick Start Guide

Use this quick start guide to find your way easily around your new Memory-Map product.

## Scrolling and Zooming

To move (or pan) your view of the map, simply click anywhere on the map and drag it with the mouse.

There are multiple options for zooming in and out:

- If you have a mouse with a scroll wheel, roll the wheel away from you to zoom in (show more detail) or towards you to zoom out.
- If your mouse doesn't have a wheel, click the right mouse button. A pop-up menu opens with commands to zoom in and out.
- On the keyboard, press the + key to zoom in and the - key to zoom out.

There are also zoom-in and zoom-out buttons on the toolbar.

Each time you zoom, the focal point (the point that doesn't move on the screen) is the cursor position. This allows you to quickly zoom in on any part of the map just by pointing at it and rolling the wheel or clicking the + key.



## Changing Maps

To view other maps, position the mouse on the map and right click. A menu appears containing the commands: **Same scale, In to larger scale** and **Out to smaller scale**. The larger scale and smaller scale commands select the next available map at the cursor position. You can also select the **Maps at cursor** command from the pop-up menu to present the **Map List** dialog, with a list of the available maps sorted into the order of their scale.



## Planning a Route

To plan your route, click the **Route** toolbar button and click once on the map at the start-point of your route. Then click once for each intermediate waypoint, and **double-click to end the route**.

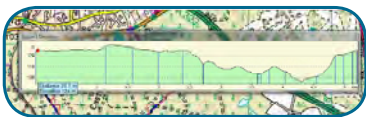
**To scroll the map while you are creating a route**, if you have a mouse with a wheel, you can click and drag with the wheel instead of the left button. If you don't have a mouse with a wheel, hold down the shift key while you click and drag, or use the cursor keys.

Double-click on the route (not on one of the waypoints) to display the details of your route in a tabular form. You can now name your route.

Double clicking on one of the waypoints shows the details of the waypoint. In this form, you can change the name, edit the latitude and longitude to an exact known position, change the waypoint icon, and turn on and off the display of the waypoint name on the map.

You can use the mouse to select and drag on-screen objects such as waypoints and marks. Once you have created a route, try dragging one of your waypoints. Notice how the route, and the waypoint you selected are highlighted.

Right-clicking on a waypoint offers a number of options for editing a route, such as adding or deleting a waypoint. A different pop-up menu appears when you right-click on a route away from the waypoints.



## Displaying the terrain elevation profile

To display the elevation profile, right-click on the route and select **Profile**.

The vertical blue lines indicate the location of your waypoints. As you move the cursor across the profile window, a red dot on the map is synchronized with the red dot on the profile, allowing you to easily cross-

reference the profile with the map. The distance from the start and the height at that point is also displayed at the cursor.

## Programming a handheld GPS

Once you have planned your route, Memory-Map Navigator can program the data into a GPS to guide you while you are en route.

(See *Connecting a GPS* in the software help files.) Once the GPS is connected right-click on the route, and select **Send to GPS**.

Your route is now on the GPS, ready to aid navigation.

## Finding a Place

Select **Search > Find Place...** type a few characters of the name you are looking for, and click **Search**. A list of matching feature names is presented. You can restrict the list to certain types of features using the **Category** control. Select a feature in the list and click **View**, and the largest scale map or chart showing the feature is opened. The mouse cursor is moved to point at the feature.

*Tip: If you import a new index to your PC or Pocket PC, Memory-Map automatically overwrites the previous index.*

## Opening the 3D display

First scroll and zoom the map so the area you want to see is centred in the map window.

Then click the **3D World** toolbar button. A window is shown displaying the 3D model.

Alternatively, you can right-click on a route or a track in the map window, and select **3D Fly-through**. This opens the 3D World window, and allows you to "Fly" along the route or track. Click the play button to view the fly-through. The 3D World works with any map, aerial photo or satellite image.

